



CREATING A FRAMED SITE IN SS

Dave Velten (dvelten@gmail.com)

Boston TMG User Group

17 November 2012

FRAMED WEB SITES

- “Framed” web sites display two or more pages within the same browser window.
- This is old technology that has a few advantages and many more disadvantages and is generally not recommended for internet use.
- However, for **personal** use **locally** on a PC, it can be useful.
- This presentation shows a method for displaying the Surname Index in the left-hand frame, with an optional custom menu script to add a Surname Index button to the left frame.



EXAMPLE OF A FRAMED SITE

The screenshot shows a web browser window displaying a framed website. The browser's address bar shows the file path: `file:///C:/Users/Dave/Documents/My%20Dropbox/SS3/Research-o/index.htm`. The website is titled "Research Database" and features a navigation menu with links: "Main Page", "Surname Index", "Master Index", "Places", "Images", "What's new", "Charts", "Search", and "Blog". The main content area contains the text: "Complete database for research purposes, not for publication. Contact me for additional information." Below this, a copyright notice reads: "Copyright © 2009-2012 David Velten. All Rights Reserved". The compiler is identified as "David Velten, Bolton, MA", and the site was updated on "1 Nov 2012 at 9:19:00 PM; 13,908 individuals". The footer states: "Page created by John Cardinal's Second Site v4.2.2. | Based on a design by growdesign".

The left frame of the website contains a navigation menu with a grid of letters (A-Z) and a search bar. Below the search bar, the text "(?) (239)" is displayed. A section titled "A" lists various surnames and their corresponding counts, such as "Abraham (1)", "Abzill (1)", "Accardi (1)", "Acht (3)", "Acierno (1)", "Ackermann (2)", "Adam (4)", "Adams (6)", "Adelman (5)", "Adelsperger (1)", "Adkins (2)", "Adwell (3)", "Aguirre (19)", "Ahart (13)", "Ahn (3)", "Akers (2)", "Alacoque (1)", "Alarcon (2)", "Albertsen (3)", "Albright (6)", "Alexander (1)", "Alexander-Daniel (2)", "Allen (5)", "Aller (2)", "Alleshouse (1)", "Allman (16)", "Allonas (1)", "Alsup (3)", "Alt (73)", "Alten (2)", "Altenberger (2)", "Altman (1)", "Altmeyer (3)", "Altschuck (1)", "Altvater (2)", "Altwies (5)", "Amann (2)", "Ambacher (2)", "Amburgy (2)", "Amend (10)", "Anderson (5)", "Anderson (10)".



FRAMED SITE SHOWING PERSON INDEX

The screenshot shows a web browser window with two tabs: "Page Scripts" and "Research Database". The address bar displays the file path: `file:///C:/Users/Dave/Documents/My%20Dropbox/SS3/Research-o/index.htm`. The browser's toolbar includes navigation buttons, a search bar, and various utility icons. Below the toolbar, a bookmark bar lists folders such as "Obits", "Directories", "Search", "Genealogy", "Families", "Blog", "Web Tools", "Reference", "DNA", "Seller Central", "Garden", and "Google".

The main content area is divided into a left sidebar and a main panel. The sidebar, titled "Surname Index", contains a list of names and birth/death years, with "Weinert (cont.)" selected. The main panel displays the profile for **Valentin Weinert¹**, including his birth and death dates, parents, relationships, and family details.

Surname Index
Previous Page Next Page

Weinert (cont.)

- Matthias b. 1783
- Michael b. 1720, d. 1778
- Nicolaus b. 1850
- Nikolaus b. 1794
- Nikolaus b. 1807
- Peter b. 1781, d. 1784
- Peter b. 1877
- Rosina b. 1814
- Sebastian b. 1803, d. 1803
- Sebastian b. 1804
- Stefan b. after 1886
- Theresia
- Valentin b. 1750, d. 1813
- Valentin b. 1780
- Veronika b. 1826, d. 1902

Weinet

- Anna Elisabeth
- Johann
- Johann b. 1760, d. 1788
- Michael b. 1720, d. 1778

Weinke

- Karen Marie
- Steve

Weinman

Valentin Weinert¹

M, #9466, b. 26 August 1750, d. 19 December 1813

Father* Michael **Weinert** b. 29 Sep 1720, d. 22 Nov 1778

Mother* Anna Catharina **Theis**

[Pop-up Pedigree](#)

Relationship 4th great-grandfather of David **Velten**.

Birth* Valentin **Weinert** was born on 26 August 1750 in Niederburg, Sankt Goar, Rheinland, Germany.¹
He was the son of Michael **Weinert** and Anna Catharina **Theis**.

Marriage* He married first Anna Catharina **Schinck**, daughter of Michael **Schinck** and Anna Catharina **Theis**, on 23 January 1776 in Niederburg, Sankt Goar, Rheinland, Germany.²

Marriage* He married second Theresia **Werker** on 31 January 1792 in Catholic Church, located in Csonoplya, Bács-Bodrog County, Hungary.¹

Death* Valentin died on 19 December 1813 in Csonoplya, Bács-Bodrog County, Hungary, at age 63.¹

Family 1 Anna Catharina **Schinck** b. 23 Feb 1752, d. 2 Jan 1792

Children

- Maria Elisabeth **Weinert**² b. 8 Oct 1777
- Valentin **Weinert**² b. 24 Sep 1780
- Anna Katharina **Weinert**² b. 20 Jul 1784
- Katharina **Weinert**² b. 16 Oct 1787
- Margarethe **Weinert**² b. 30 Jul 1791, d. 1 Jan 1792

Family 2 Theresia **Werker**

Child

- Nikolaus **Weinert**⁺¹ b. 1 Feb 1794

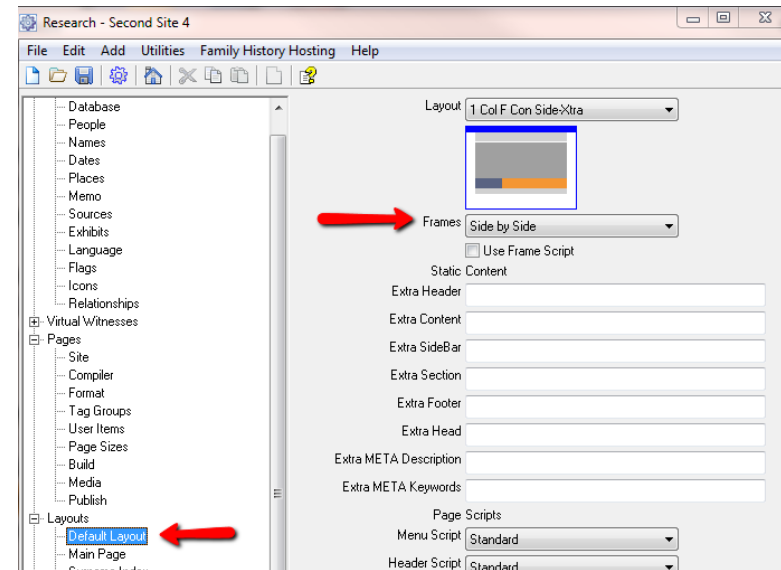
Charts Dave's Pedigree (Indented)

Last Edited 16 Jun 2009



SELECTING A FRAMED LAYOUT

- Go to Layout section of SDF
- In Default Layout.Frames, select *Side by Side* from drop down list.
- By default, the Surname Index and Name Index will load in the left frame.
- The rest of the site pages will appear in the main frame.
- The Use Frame Script checkbox tells SS to add a script to force load pages in frameset (useful for internet sites)



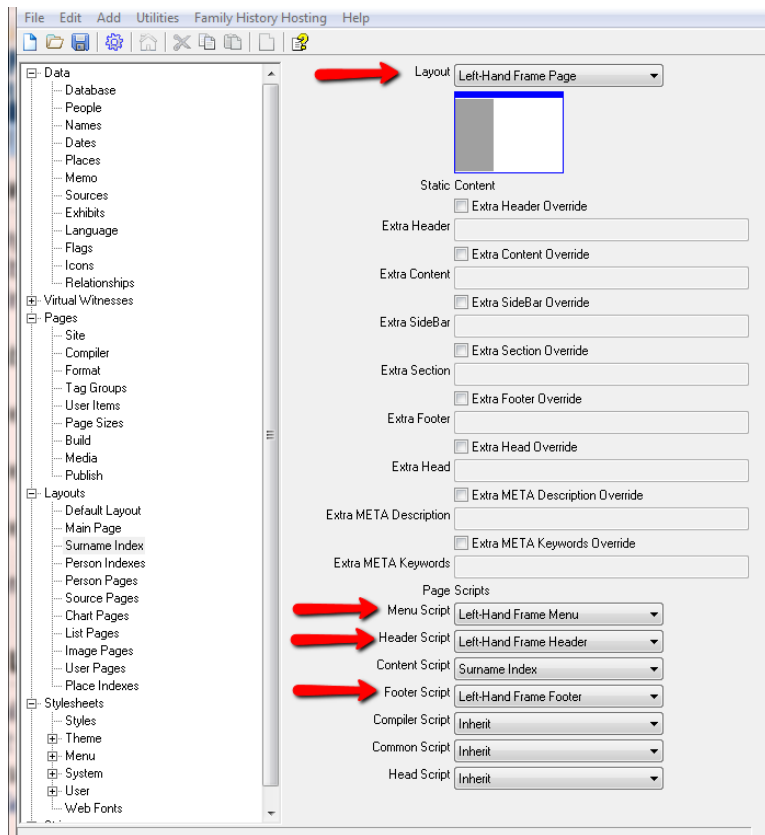
SCRIPT CHANGES FOR FRAMED SITES

- When you select Side by Side for Default Layout.Frames, SS will offer to optimize layout scripts for frames. If you agree, SS will make the changes.
- In Layout.Surname Index and Layout.Person Indexes, the Layout script is now selected to be Left Hand Frame Page.
- In addition, the Page Scripts are changed to use a Left Hand Frame script for Menu, Header, and Footer.

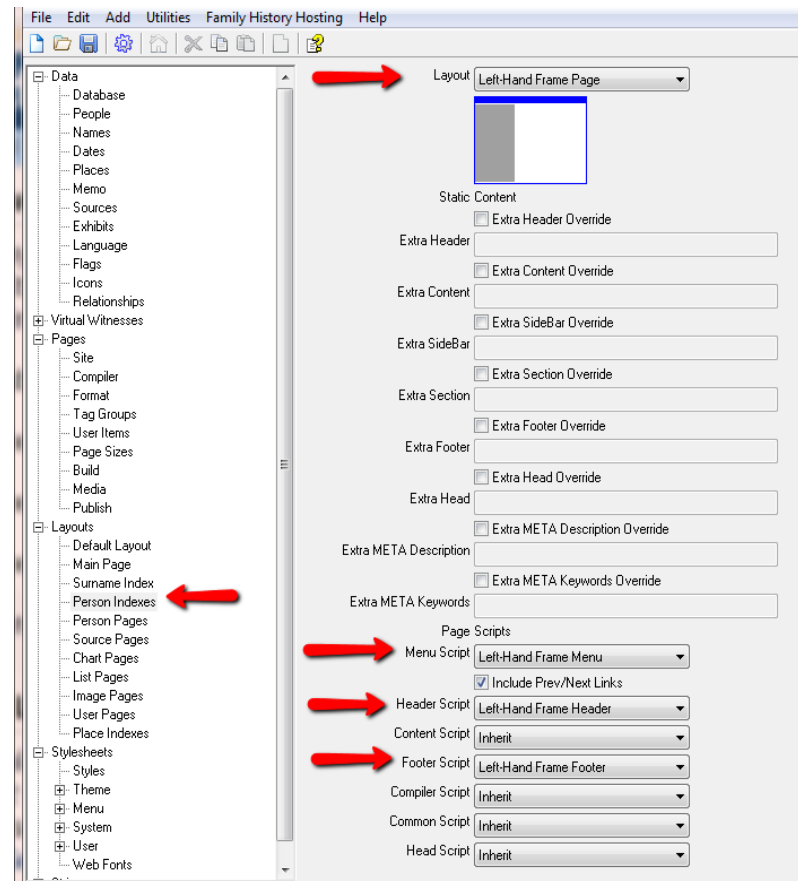


LAYOUT SCRIPT CHANGES FOR FRAMED SITE

Surname Index Layout



Person Indexes Layout



ADDING A CUSTOM MENU SCRIPT

- The previous steps are all you need to do to create a framed site. But the left hand frame lacks a menu button to return to the Surname Index, which I find irritating. To remedy that requires a custom script.
- To add the button to the menu requires a custom menu script written by Terry Riegel based on existing John Cardinal menu script.
- To add custom scripts, first create a Scripts folder in the UDF folder, if one doesn't already exist.
- Then create a Menu subfolder within the Scripts folder, if one doesn't already exist.
- Custom menu scripts are placed in the Menu subfolder and then will appear in the Menu drop down lists.



CREATING THE CUSTOM MENU SCRIPT

- Create a file called *RR Left-Hand Frame Menu.ssi* with the following text::

' Second Site: Menu script

' Based on script Copyright (C) 2007 by John Cardinal

' Modified 2007-07-07 TWR

' This version is intended for pages that reside

' in the left-hand frame of a "Side by Side" framed site.

Function GetLeftHandPrevNext(Menu)

Dim sltems

Dim sResult

sltems = GetPrevNext(True)

If sltems <> "" Then

sResult = Wrapper("<ulclass=""buttonhorz"">", sltems,
"")

Else

' TWR Added surname index link & modified following line to
combine with previous/next

sltems = "
Surname
Index

"

sltems = sltems & GetPrevNext(False)

sResult = Wrapper("<ul class="" & Menu & """">", sltems,
"")

End If

If sResult <> "" Then

GetLeftHandPrevNext = "<div id="" & Menu & """">" &
sResult & _

"<div class=""stretch""></div></div>"

End If

End Function

Function GetTopMenu()

GetTopMenu = GetLeftHandPrevNext("menutop")

End Function

Function GetMenuBar()

' No output

End Function

Function GetSideBar()

' No output

End Function

Function GetBottomMenu()

GetBottomMenu = GetLeftHandPrevNext("menubottom")

End Function



CREATE AND USE THE CUSTOM MENU SCRIPT

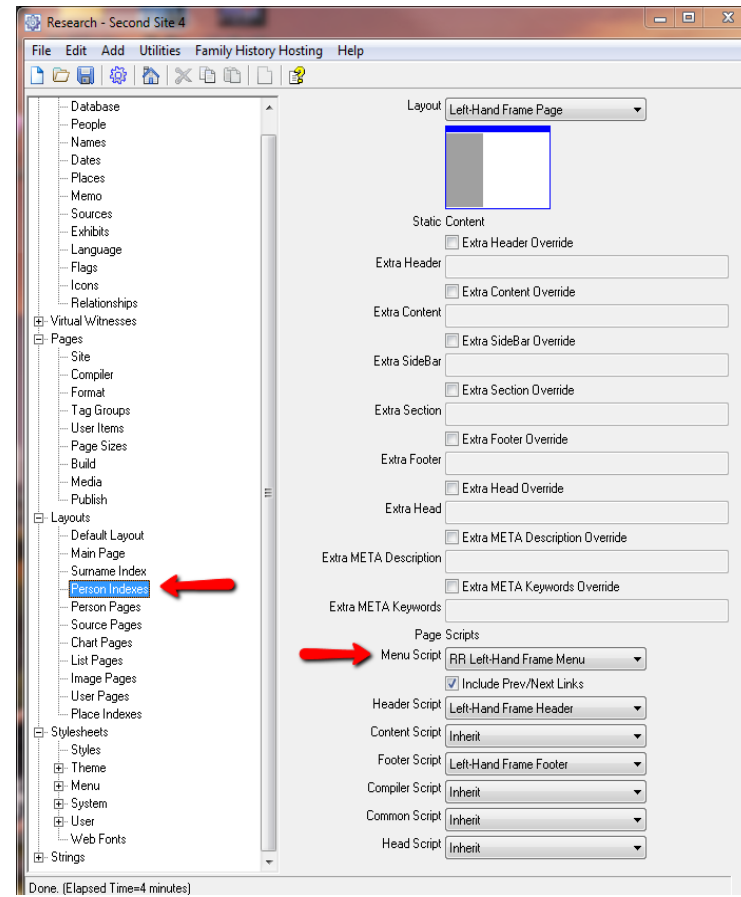
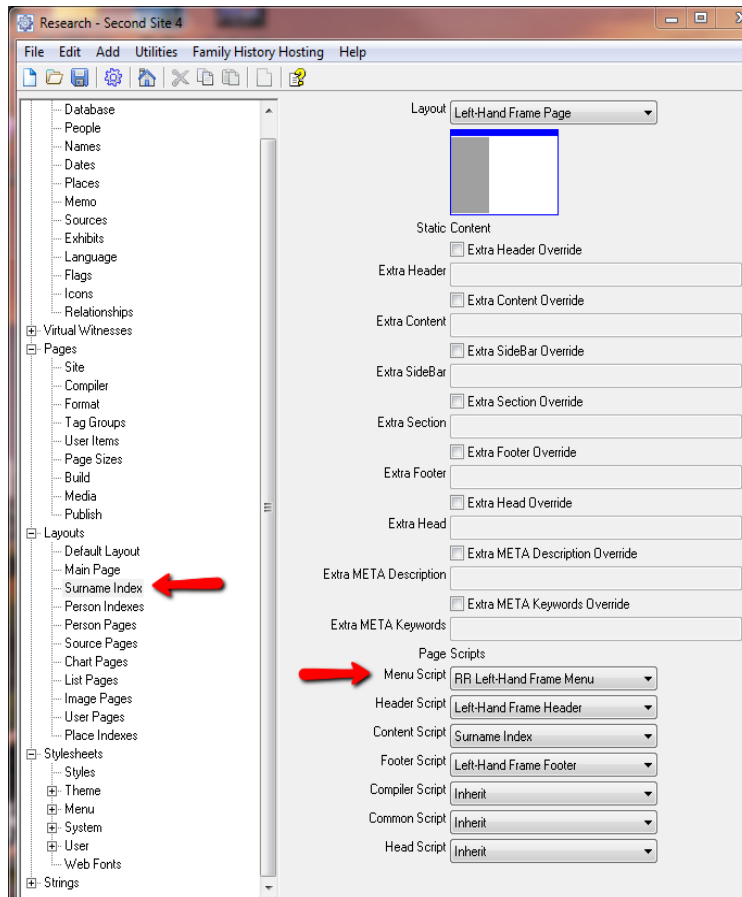
- Create a file called “RR Left Hand Frame Menu.ssi” containing the script on the previous slide.
- Place it in the UDF/Scripts/Menu folder.
- Restart Second Site.
- In Layouts.Person Indexes.Menu Script, select the RR Left-Hand Frame Menu option.
- A Surname index button will now appear at top and bottom of the Person Indexes frame when you build your framed site.



LAYOUT CHANGES USING CUSTOM SCRIPT

Surname Index Layout

Person Index Layout



BONUS MATERIAL

- Recently discussed script to generate a copyright statement that automatically updates each year with new year:

```
<p>Copyright &copy; 2009-
```

```
<script>document.write((newDate).getFullYear())</script> Your Name. All Rights Reserved</p>
```

