

INTRO TO SECOND SITE V5

Dave Velten

Boston TMG User Group

18 May 2013

UPGRADING TO SECONDSITE VERSION 5

- V5 is a paid update if you have a valid SS V4 license.
- If you don't have a V4 license, you will have to purchase the full product again.
- The SDF format has changed extensively but V5 will convert your project to the new format.
- V5 now asks if you want to overwrite the old SDF, so you can keep your V4 SDF if you want to also continue using V4 or want to rename your SDF for the new version.



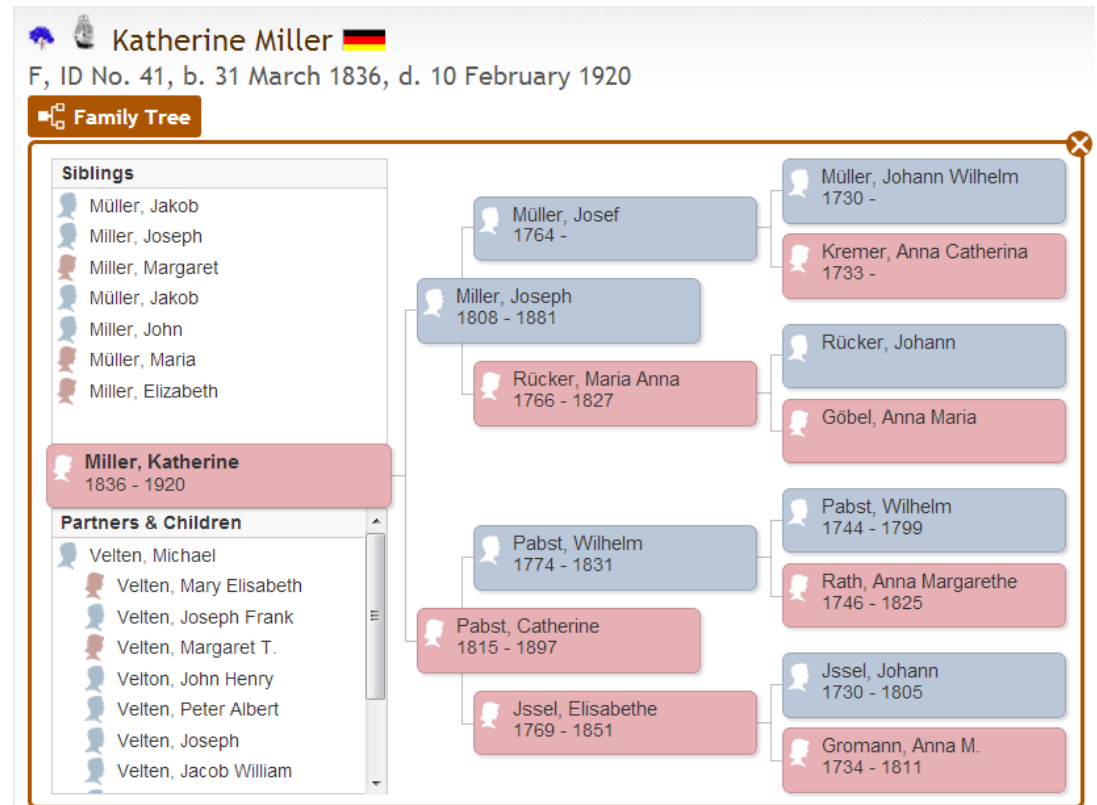
HIGHLIGHTS

- Major changes were made to SS to allow users to further customize their site without writing custom themes or formats. New **Person Entry** and **Body Tags** sections were added.
- Pop-up Pedigree replaced with new **Family Explorer**
- **Drop-down menus** added
- Enhancements to **Calendar** user item.
- **Map** support updated
- Improved citation reference support
- Many, many other changes



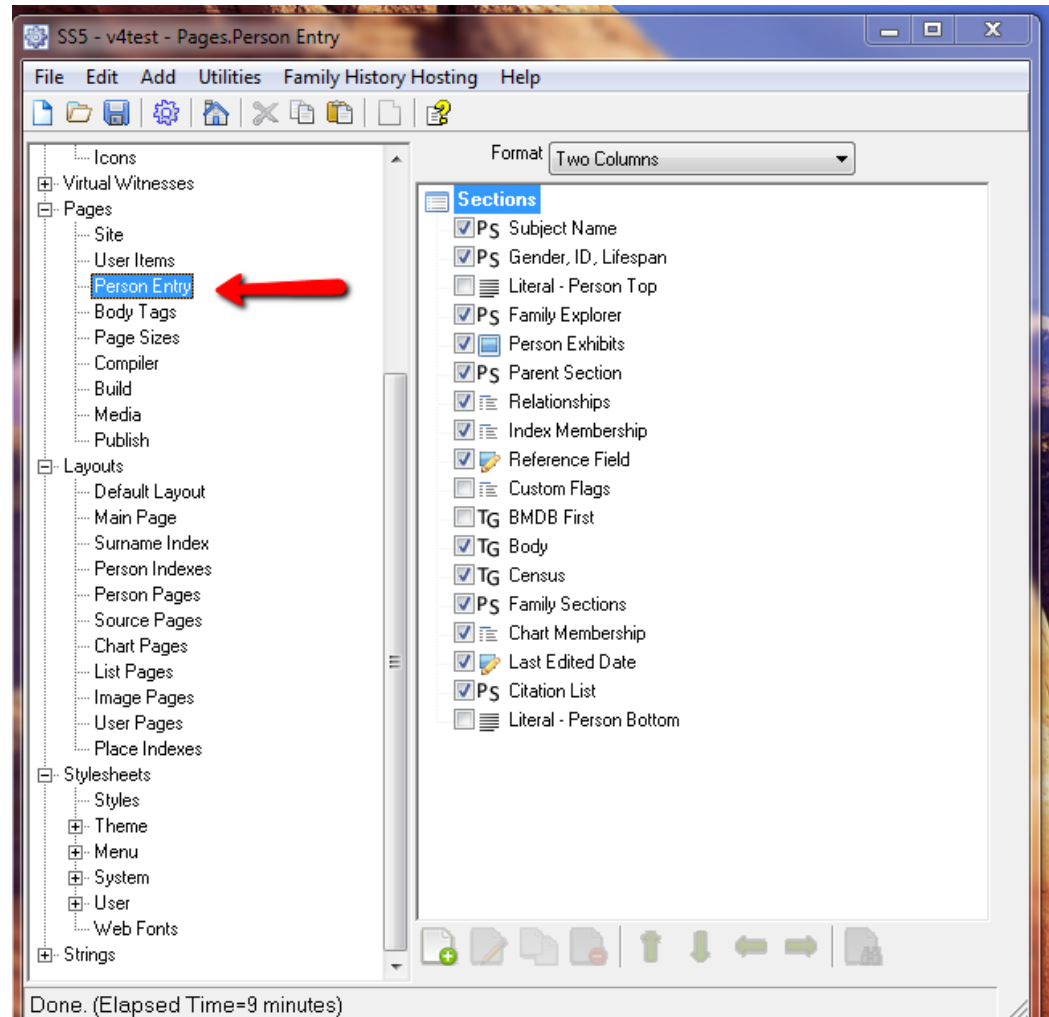
NEW FAMILY EXPLORER

- Replaces pop-up pedigree
- Now includes siblings, partners and children
- Uses an icon with an icon and text option
- Choose icon or text by editing Family Explorer item in Person Entry Section



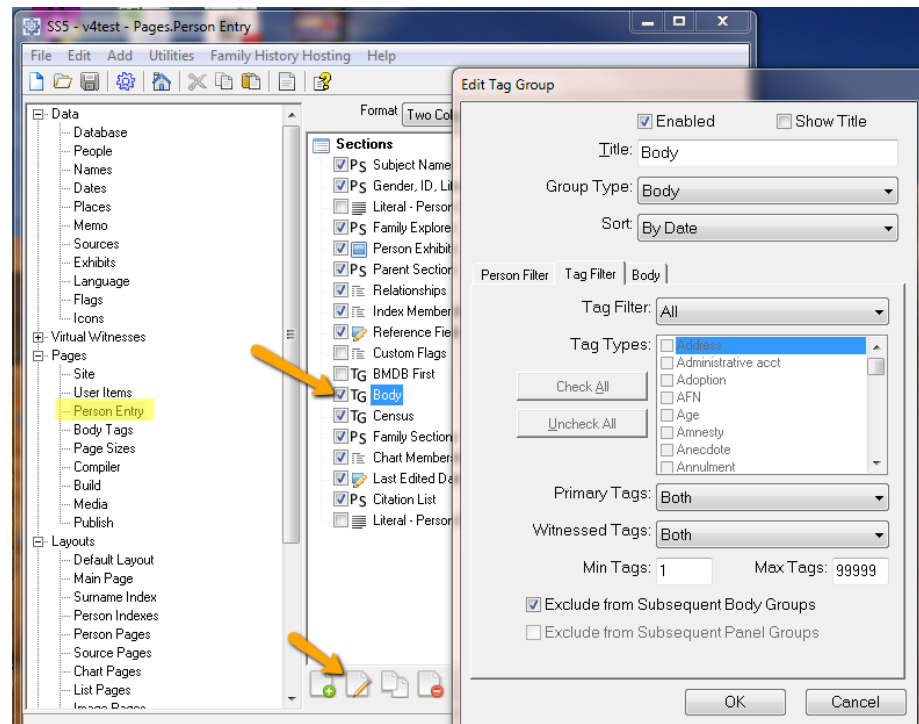
NEW PERSON ENTRY SECTION

- SS V5 has a new Person Entry section which replaces the Format section. Users now have control over appearance of entries on Person pages without resorting to custom formats.



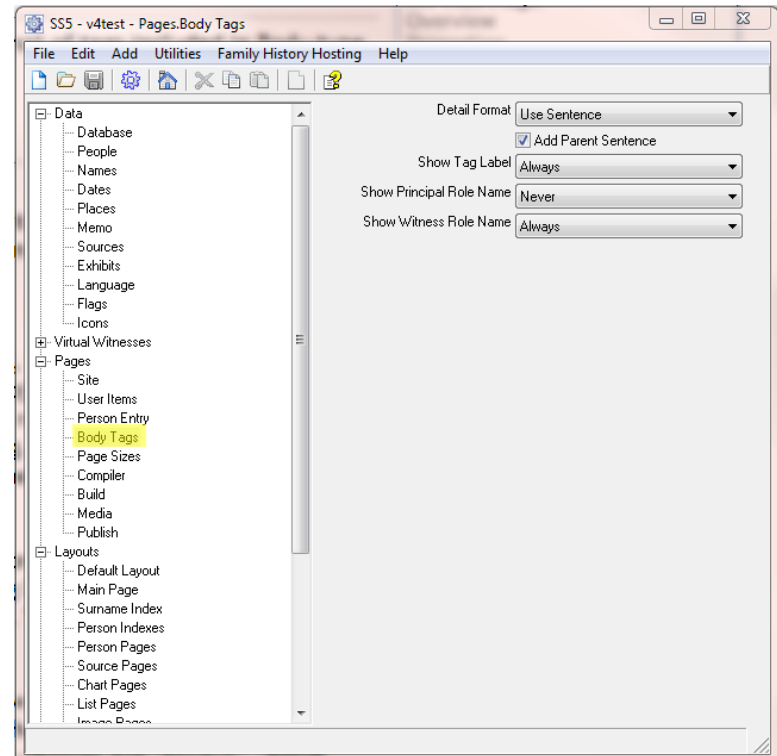
CHANGING APPEARANCE OF BODY SECTION

- Control inclusion of an item with check box.
- Edit each item to change its properties
- Control order of appearance of each item by moving it up or down in the section window



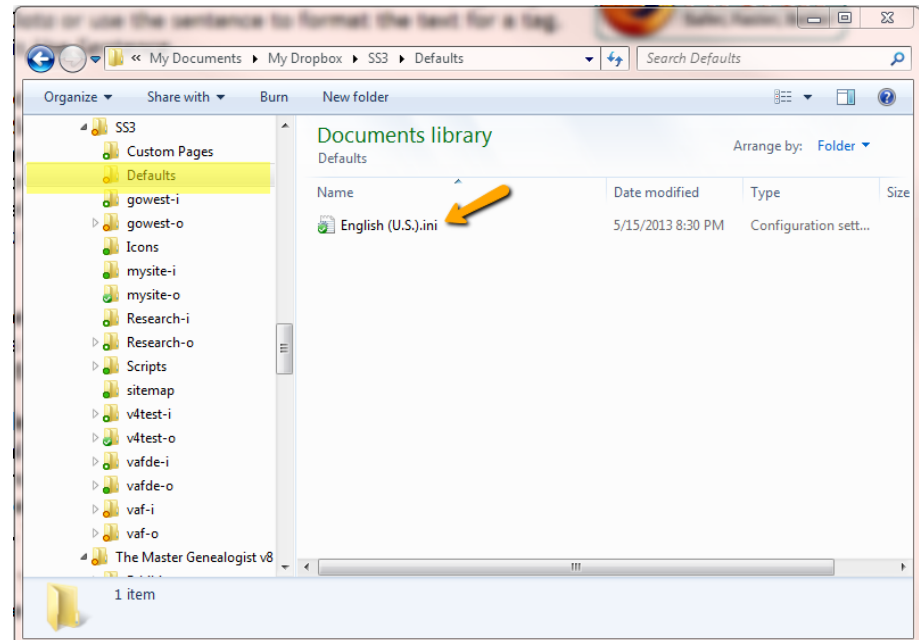
NEW BODY TAG SECTION

- Controls format of tags in body of narrative
- Detail Format – use sentence or raw date
- Add Parent Sentence – appears after birth or baptism tag
- Show Tag Label, Principal Role Name, Witness Role name – options are Always, BMDB only, Never



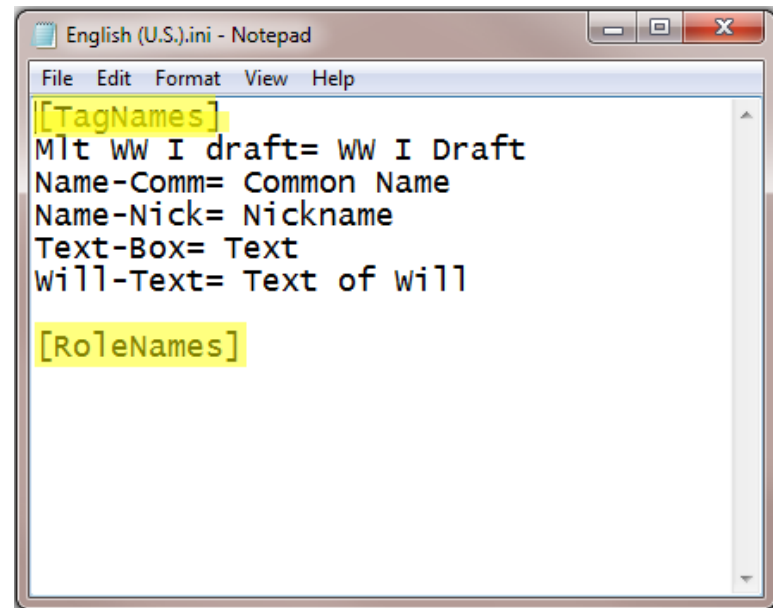
TAG AND ROLE LABEL TRANSLATION

- SS has a tag label translation feature which was extended in V5.5 to include role labels
- Create an **INI** file and place it in **Defaults** subdirectory of UDF
- Name of INI file must be the same as the **language**, e.g. **English (U.S.)**.



LANGUAGE TRANSLATION FILE

- There are two *optional* sections:
- **[TagNames]** defines translations for Tag Labels
- **[RoleNames]** defines translations for Roles
- **Format** of each rule is:
Name=
TranslatedName



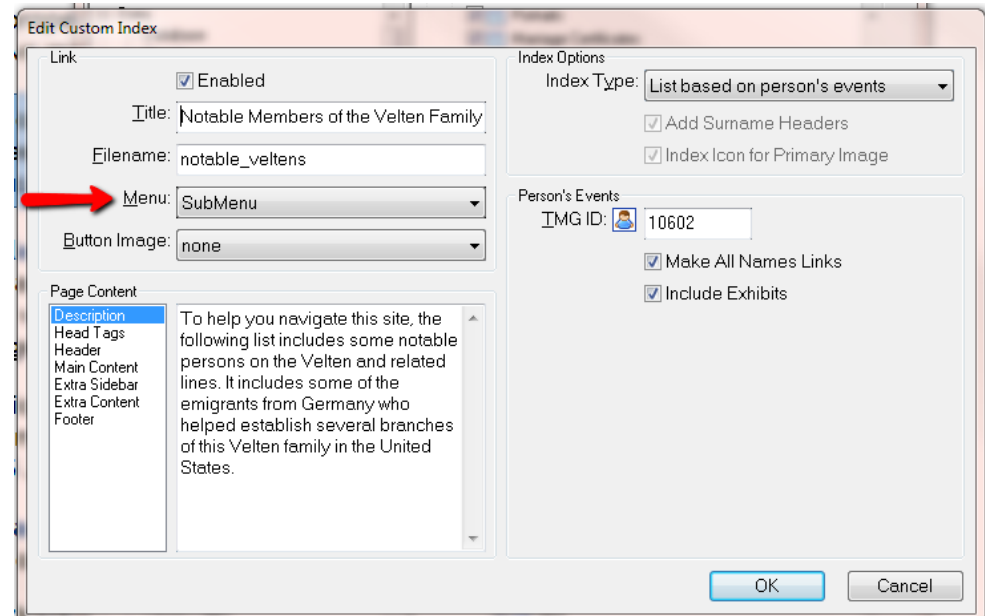
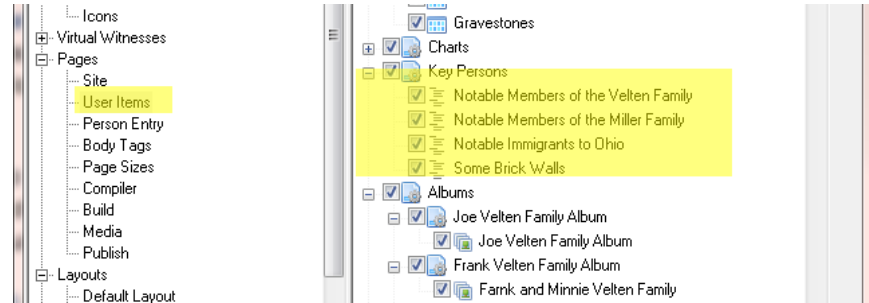
```
English (U.S.).ini - Notepad
File Edit Format View Help
[TagNames]
Mlt WW I draft= WW I Draft
Name-Comm= Common Name
Name-Nick= Nickname
Text-Box= Text
Will-Text= Text of will

[RoleNames]
```



DROP-DOWN MENUS

- Menu items on MenuBar or SideBar can have drop-down menus.
- To be eligible, user items must:
 1. Be Child item of a Custom page
 2. Have a URL or filename property
 3. Menu property is set to SubMenu



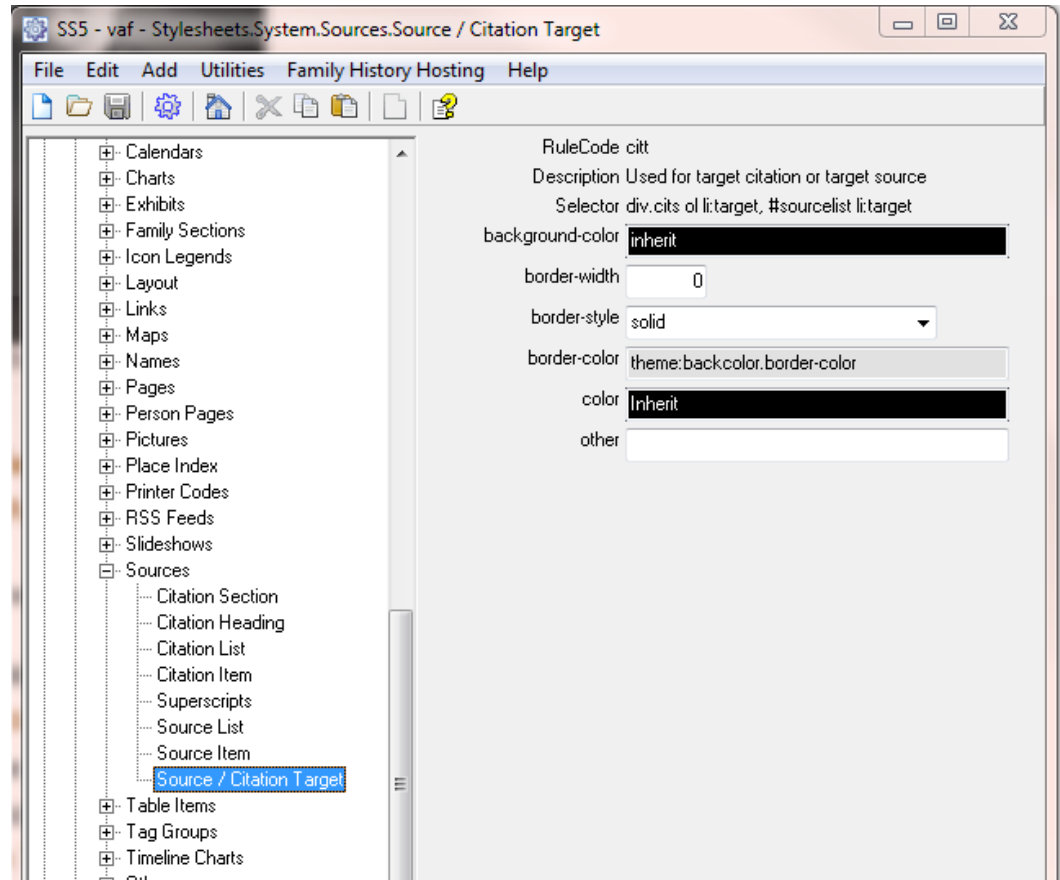
CALENDAR ENHANCEMENTS

- Added **Range** option to Calendar User Item to permit single-day calendars to be created.
- Added **Page Section** to Calendar User Item so calendar can be positioned elsewhere, such as in the Sidebar or Extra Section.
- Added **Date Format** option to Calendar User Item to provided control over the format of imprecise dates (such as before or circa dates) appearing in Calendars.



CITATION AND SOURCE REFERENCES

- Citation references are now **links** to the citation (just as source references always were).
- Added Stylesheets.System.Sources.Source/**Citation Target** to control appearance of citation or source when they are reached from a link.



MAPPING CHANGES

- SS was updated to use latest Google Maps API and conform to Google requirements to not show their full site in a frameset.
- “Virtual Earth” was renamed to Bing, uses latest Bing API. Bing now requires an API key.
- Removed support for Yahoo! And MapQuest. Yahoo! dropped their map maps service and MapQuest API no longer is practical to use with SS.
- Map Editor operates a little differently now. Check Help page before using.

